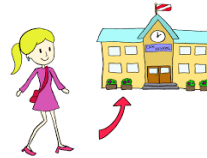


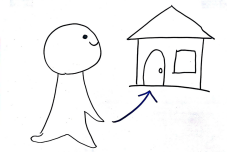
CH3\_Writing 2\_verbs (Print out and write in Japanese- try to use kanji you have learned.)

Review basic verbs- **Do not forget some adverbs/objects/ particles etc.** Use polite non-past affirmative. Try to use kanjis you have learned as much as possible.

- (1) 7am (2) teeth (3) coffee (4) breakfast (5) university (6) study



- (7) go to (8) go home (9) with family (10) TV (11) 10pm  
(かぞく)



**Example:**

1) 午前7時におきます。

2) \_\_\_\_\_

3) \_\_\_\_\_

4) \_\_\_\_\_

5) \_\_\_\_\_

6) \_\_\_\_\_

7) \_\_\_\_\_

8) \_\_\_\_\_

9) \_\_\_\_\_

10) \_\_\_\_\_

11) \_\_\_\_\_

12) Make your own( you do every day)\_\_\_\_\_